

# TIPPMANN®

## M4 Carbine Low Energy Air Gun

### Owner's Manual

Manuel d'utilisateur  
Manual del Usuario



**READ ALL INSTRUCTIONS AND WARNINGS  
IN THIS MANUAL BEFORE USING THIS  
LOW ENERGY AIR GUN.**

**LISEZ TOUTES LES INSTRUCTIONS AINSI QUE  
LES AVERTISSEMENTS DE CE MANUEL AVANT  
D'UTILISER CETTE REPLIQUE.**

**LEA LAS INSTRUCCIONES Y LAS ADVERTENCIAS  
QUE ENCUENTRA EN ESTE MANUAL ANTES DE  
USAR ESTA PISTOLA DE AIRE CON BAJA ENERGIA**

**WARNNG**

**This is not a toy. Misuse may cause serious injury or death. Eye, face, and ear protection designed for Low Energy Air Guns (LEAG) must be worn by the user and any person within range. We recommend you be at least 18 years old to purchase. Persons under 18 must have adult supervision when using this product. Read the Owner's Manual before using this product.**

**AVERTISSEMENT**

**Ceci n'est pas un jouet. Une mauvaise utilisation peut provoquer des blessures sérieuses ou la mort. Le port de la protection des yeux conçue pour les répliques LEAG (Low Energy Air Gun) est obligatoire pour l'utilisateur et toute personne à portée de tir. Nous recommandons d'avoir 18 ans pour acheter une réplique. Toute personne n'ayant pas 18 ans doit être accompagnée d'un adulte lors de l'utilisation de ce produit. Lisez le Manuel d'utilisateur avant d'utiliser ce produit.**

**ADVERTENCIA**

**Esto no es un juguete. Un uso inapropiado puede causar serias heridas o la muerte. Ojos, cara y oídos deben ser protegidos todo el tiempo, con la protección diseñada para LESG tanto por jugadores como por cualquier persona que este en el radio de alcance. Recomendamos al menos 18 años para la compra y uso. Las personas menores de 18 años deben usar este producto bajo la supervisión de un adulto. Lea el Manual del Usuario antes de usar este producto.**

## WARNING

### Safety is Your Responsibility

Read and familiarize yourself and any other user of this Low Energy Air Gun with the safety instructions in this manual. Follow these instructions when using, working on, transporting, or storing this Low Energy Air Gun.

Always keep the Selector Switch in Safe mode unless firing as detailed in instructions on page 6.



## AVERTISSEMENT

### La sécurité est Votre responsabilité

Lisez et familiarisez-vous avec les instructions de sécurité qui se trouvent dans ce manuel. Suivez ces instructions lors de l'utilisation, l'entretien, le transport ou le rangement de votre réplique LEAG.

Maintenez toujours le sélecteur en mode Sécurité sauf quand vous tirez, comme indiqué dans les instructions en page FR-3.



## ADVERTENCIA

### La Seguridad es Su Responsabilidad

Lea y familiarícese usted y cualquier otro usuario de este marcador con las instrucciones de seguridad de este manual. Siga estas instrucciones cuando se utiliza, trabajando, transporte, o almacenar este marcador.

Mantenga siempre el seguro del gatillo activado a menos que sea necesario hacer disparos. Como se ve en las instrucciones de la página ES-3.



 **WARNING**

This is not a toy. Misuse may cause serious injury, especially to the eye. Eye protection designed for Low Energy Air Guns (LEAG) must be worn by the user and any person within range. Read this owner's manual before using this product.

We recommend you be at least 18 years old to purchase. Persons under 18 must have adult supervision when using this product. You must follow all federal, state, and local laws governing the ownership and use of Low Energy Air Guns. Parents must not allow minors to take this product to school. Having this product at school may be a crime.

 **WARNING**

Do not brandish or display this product in public as it may cause confusion and may be a crime. Police or others may mistake this product for a real firearm. Altering the coloration or markings required by state or federal law to make the product look more like a firearm is dangerous and may be a crime.

 **WARNING**

Always make sure that the Selector Switch is in Safe mode (see instructions on page 6) to prevent damage to property, serious injury, or death.

# M4 Carbine

Manufactured by **TIPPMANN®**

**Tippmann Sports, LLC**

2955 Adams Center Road, Fort Wayne, IN 46803 USA  
P) 260-749-6022 • F) 260-749-6619 • [www.Tippmann.com](http://www.Tippmann.com)

**Tippmann Sports Europe, SPRL**

Rue du Mont D'Orcq 16, Z.I. Tournai Ouest, 7503 Froyennes, Belgium  
Telephone +32 (0) 69 549 578 • [europeservice@tippmann.com](mailto:europeservice@tippmann.com) • [www.Tippmann.com](http://www.Tippmann.com)

CONGRATULATIONS on the purchase of your Tippmann M4 Carbine Low Energy Air Gun (LEAG). This M4 Carbine will provide many years of dependable service, if cared for properly. Please take time to read this manual thoroughly and become familiar with your M4 Carbine's parts, operation, and safety precautions before you attempt to load or fire this M4 Carbine. If you have a missing or broken part, or need assistance, please contact Tippmann Customer Service at 1-800-533-4831 for fast, friendly service.

## Table of Contents

Warning/Liability Statement and Safety Instructions .....	6
Getting Started .....	8
1. Loading the Magazine .....	8
2. CO2 Cartridge (12 gram) Installation .....	9
3. Firing Your M4 Carbine .....	9
4. Unloading Your M4 Carbine .....	9
Velocity and Hop Up Adjustment .....	10
Rate of Fire Adjustment and Factory Settings .....	11
M4 Carbine Alternative Air Delivery .....	12
Converting from 12g CO2 Cartridge to Remote Line or ASA .....	12
Converting from Remote Line or ASA to 12g CO2 Cartridge .....	13
Installing the supplied Remote Line Connector .....	14
Installing the Remote Line System .....	14
Optional ASA Installation .....	15
HPA/CO2 Cylinder Installation .....	15
Air/CO2 Supply Cylinder Warnings .....	16
Air/CO2 Supply Cylinder Safety Tips .....	17
Air/CO2 Supply Cylinder Removal .....	17
Repairing Air/CO2 Supply Cylinder Leaks .....	18
Cleaning and Maintenance .....	18
Storage .....	19
M4 Carbine Disassembly and Assembly .....	19
Upper Receiver .....	20
Barrel Assembly .....	20
Hop Up Assembly .....	21
Rear Bolt .....	21
Front Bolt, Power Tube, and Valve .....	22
Lower Receiver .....	22
Puncture Valve Assembly .....	22
Puncture Valve Body Assembly .....	23
Trigger Group Assembly .....	23
Flow Control Assembly .....	25
Troubleshooting .....	25
M4 Carbine Low Energy Air Gun Assembly Diagrams .....	26-28
M4 Carbine Low Energy Air Gun Specifications .....	29



## Warning/Liability Statement

This Low Energy Air Gun (LEAG) is classified as a dangerous weapon and is surrendered by Tippmann Sports, LLC with the understanding that the purchaser assumes all liability resulting from unsafe handling or any action that constitutes a violation of any applicable laws or regulations. Tippmann Sports, LLC shall not be liable for personal injury, loss of property or life resulting from the use of this weapon under any circumstances, including intentional, reckless, negligent or accidental discharges.

All information contained in this manual is subject to change without notice. Tippmann Sports, LLC reserves the right to make changes and improvements to products without incurring any obligation to incorporate such improvements into products previously sold.

If you, as a user, do not accept liability, Tippmann Sports, LLC requests you do not use a Tippmann Sports, LLC Low Energy Air Gun. By using this LEAG you release Tippmann Sports, LLC of any and all liability associated with its use.

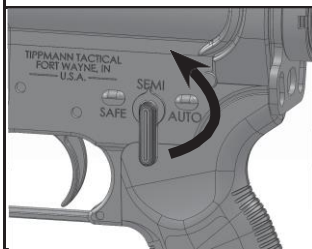
## Safety Is Your Responsibility!

### ⚠ WARNING

**Except when your M4 Carbine is in use, always make sure that the Selector Switch is in Safe mode.**

**To put in Safe mode: Move the Selector Switch so the indicator points to "SAFE" as shown.**

**To go to a Fire mode: Move the Selector Switch so the indicator points to either the "SEMI" or "AUTO" position.**



The ownership of this M4 Carbine places upon you the total responsibility of its safe and lawful use. You must observe the same safety precautions as you would any firearm to assure the safety of not only yourself but everyone around you. Outlined here are some general precautions to be aware of. The user should at all times use caution and common sense when using this M4 Carbine and always remember that airsoft can only survive and grow if it remains safe!

- Always handle and operate the Low Energy Air Gun safely.
- Choose safe and proper targets.
- Backstops should be inspected for wear before and after each use. Discontinue use if the backstop surface shows signs of failure. Since backstop surfaces will eventually fail, be sure to position the backstop in a location that remains safe should the backstop fail. Stop using the backstop if an airsoft BB rebounds or ricochets.
- Do not load or fire this M4 Carbine until you have completely read this manual and are familiar with its safety features, mechanical operation, and handling characteristics.
- Handle this and any gun as if it were loaded at all times.
- Keep your finger off the trigger until you are ready to shoot.
- Do not look down the barrel of a Low Energy Air Gun. Accidental discharge into the eyes may cause permanent injury or death.





- Keep the M4 Carbine in Safe mode until ready to shoot (see Warning on page 6).
- Never point at anything you do not intend to shoot.
- Never fire air/CO2 at anything you do not intend to shoot because there may be airsoft BBs or foreign debris lodged in the chamber or barrel.
- Do not shoot at fragile objects such as windows.
- Avoid ricochets by never shooting at hard flat surfaces or water.
- Never fire at personal property of others. The airsoft BB impact can cause damage.
- Always keep the muzzle pointed down or in a safe direction. Even if you stumble or fall, keep the muzzle in a safe direction.
- Eye, face, and ear protection designed specifically to stop airsoft BBs in the form of goggles must be worn by the user and any person within range.
- Never shoot at a person who is not protected by eye, face, and ear protection designed for airsoft.
- Pressurize and load the M4 Carbine only when it will be immediately used.
- Store the M4 Carbine unloaded, degassed, and in Safe mode in a secure place. NOTE: Before storing or disassembling, be sure to remove airsoft BBs and air/CO2 supply (see unloading and air/CO2 removal instructions on pages 9 and 17).
- Store the unloaded M4 Carbine in a safe and proper manner. Always check that it is unloaded when removing from storage or when receiving it from another person.
- Do not field strip or otherwise disassemble this M4 Carbine while it is pressurized with the air/CO2 supply.
- Dress appropriately when playing the game of airsoft. Avoid exposing any skin when playing the game of airsoft. Even a light layer of cloth will absorb some of the impact and protect you from the airsoft BBs.
- Keep exposed skin away from escaping gas when installing or removing air/CO2 cylinder or if the M4 Carbine or air/CO2 supply is leaking. Compressed air, CO2, and nitrogen gasses are very cold and can cause frostbite under certain conditions.
- Use only appropriately sized airsoft BBs. Never load or fire any foreign objects.
- Avoid alcoholic beverages before and during the use of this air gun. Handling air guns while under the influence of drugs or alcohol is a criminal disregard for public safety.
- Avoid shooting an opponent at point blank, 6 feet (2m) or less.
- Familiarize yourself with instructions listed on air/CO2 cylinder or adapter. Contact the air/CO2 cylinder or adapter manufacturer with any questions.
- Read the Air/CO2 Cylinder Warnings and Safety Tips on pages 16-17 before beginning the cylinder installation or removal.
- Always measure your M4 Carbine's velocity with a chronograph before playing airsoft and never shoot at velocities in excess of rates established by the field (see instructions on page 10).
- Do not brandish or display this product in public as it may cause confusion and may be a crime. Police or others may mistake this product for a real firearm. Altering the coloration or markings required by state or federal law to make the product look more like a firearm is dangerous and may be a crime.

## Getting Started

This Tippmann® M4 Carbine Low Energy Air Gun (LEAG) offers three options for propulsion of airsoft BBs:

- #1 - The Magazine holds a standard 12 gram CO2 cartridge to power the M4 Carbine.
- #2 - A Remote Air Line connector (included, but requires an air line and air source) is installed into the Grip. Requires removal of the puncture valve (page 12). Connect the Remote Line to an 800 PSI regulated cylinder of High Pressure Air (HPA) or CO2. An aftermarket magazine can be used for this method.
- #3 - Purchase an Air Supply Adapter (ASA) kit from Tippmann. Install the ASA kit (instructions included in the kit) to use with a cylinder of HPA (regulated at 800 PSI or lower) or CO2 to connect directly to the LEAG. Requires removal of the puncture valve (page 12). An aftermarket magazine can be used for this method.

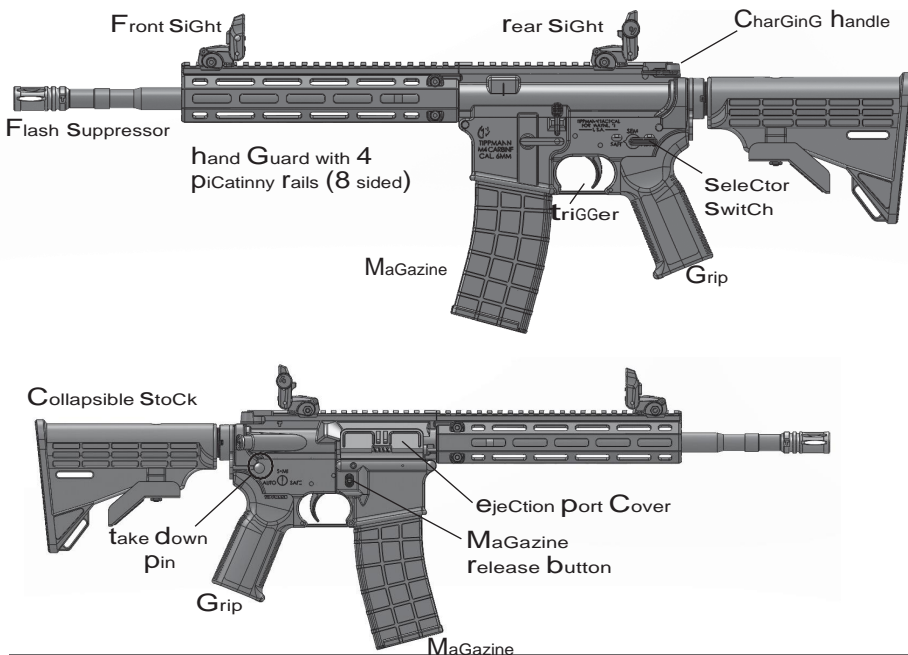
- Eye protection designed for airsoft use must be worn by the user and any person within range.
- Do not disassemble this M4 Carbine while it is pressurized with air/CO2.
- Do not pressurize a partially assembled M4 Carbine.
- Read each step completely before performing the step.

**NOTE:** Carefully hand start all threaded parts when assembling and do not overtighten, as this may potentially strip the threaded parts.

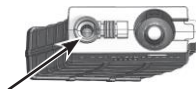
### 1. Loading the Magazine

The Selector Switch must be in Safe mode (see page 6).

- a. Press the Magazine Release Button to release the Magazine from the receiver.
- b. Orient the Magazine as shown on page 9.

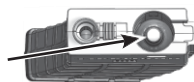


- c. Fill the Magazine with 6mm precision airsoft BBs in the opening shown by the arrow. You may find it helpful to use a loader (sold separately by your airsoft dealer). Observe the capacity of the Magazine. Do not attempt to overfill the Magazine.



## 2. CO2 Cartridge (12 gram) Installation

- a. Press the Magazine Release button to remove the magazine from the receiver. Always hold onto the Magazine in case the current CO2 cartridge has leftover pressure.
- b. Insert a new 12 g CO2 cartridge into the magazine, oriented as shown (arrow).
- c. Press the CO2 Cartridge Release button. This allows the cartridge to drop fully into the Magazine. Whenever you are installing a new cartridge, push this button to release an empty cartridge.
- d. Cock the M4 Carbine by pulling the Charging Handle all the way back and allow it to return to the forward position.
- e. Slowly reinsert the magazine into the receiver until you hear a click. The CO2 cartridge is not punctured. To puncture the CO2 cartridge, push the Magazine fully into the magazine well or install completely with one fast motion.



For attaching an alternate air source (800 PSI regulated HPA or CO2 cylinder) to the M4 Carbine, refer to the *Alternative Air Delivery* instructions starting on page 12.

## 3. Firing Your M4 Carbine

- a. Go to a designated firing area. Eye protection designed for airsoft use must be worn by the user and any person within range. If you have an alternate air source, turn on the air supply.
- b. Move the Selector Switch to a fire mode. The M4 Carbine fires in SEMI or AUTO mode. In **SEMI** mode, you have to pull back the Trigger each time you want to fire a shot. In **AUTO** mode, firing continues as long as you hold the Trigger back.
- c. Point your M4 Carbine in a safe direction and pull the trigger to fire a shot.
- d. When finished firing, put the Selector Switch in Safe mode (page 6).



Selector Switch is removed to show all Modes.

## 4. Unloading Your M4 Carbine

- a. Eye protection designed for airsoft use must be worn by the user and any person within range.
- b. Press the Magazine Release Button to release the magazine from the receiver.
- c. Any remaining CO2 in the 12 g cartridge will vent, and four to five airsoft BBs will fall from the receiver. If you have an alternate air source, turn off the air supply (see page 17 for cylinder removal).
- d. Uncock the M4 Carbine by pointing it in a safe direction and pull the Trigger. Never assume that because the LEAG magazine is removed, that a BB or foreign object is not present in the barrel. Always treat the LEAG as though it is loaded, and with the same respect you would any firearm.
- e. Return the Selector Switch to Safe mode.

## Velocity Adjustment

Prior to each time you play airsoft, check the velocity of your M4 Carbine with a chronograph (an instrument for measuring velocity). Using a .2g airsoft BB, verify that the M4 Carbine's velocity is set below 400 feet per second (or less if required by the playing field).

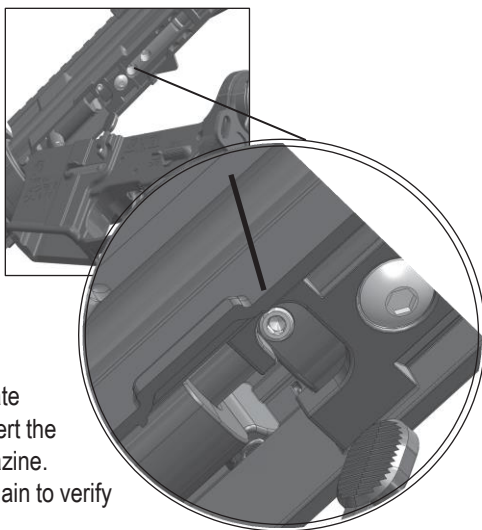
1. Remove the air supply. Press the Magazine Release Button to remove the Magazine from the receiver (refer to Step 4 on page 9), or turn off and vent the Remote Line. See page 17 for HPA/CO2 cylinder removal.



2. From the left side of the M4 Carbine, push the Take Down Pin (shown by the arrow at top right) until enough head is available on the right side to hold onto it. Pull the head of the Take Down Pin only until it stops, as it can not be completely removed.

3. Pivot the barrel muzzle downward as shown. Look for the set screw (circled) in the bottom of the Top Receiver.

4. Use the included 5/64" hex key in the Velocity Screw. Turn in 1/4 turn increments or less. Reduce the velocity by turning the Velocity Screw clockwise. To increase the velocity, turn the Velocity Screw counterclockwise. Never remove the Velocity Screw.



5. After adjusting the Velocity Screw, rotate the upper receiver back into place, insert the Take Down Pin, and reinstall the Magazine. Shoot the M4 over the chronograph again to verify the velocity of airsoft BBs.

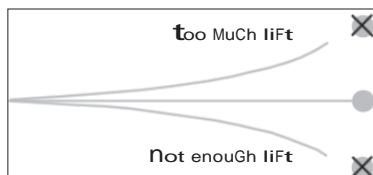
6. Repeat as necessary to attain an airsoft field approved velocity.

## Hop Up Adjustment

The M4 Carbine is manufactured with a hop up system. The purpose of this system is to change the spin on the airsoft BB as it leaves the muzzle, allowing you to tune your shot for different distances. If the M4 Carbine is shooting with too much lift, you have too much hop up. Use a 1/8" hex key to adjust the hop up. Rotate the set screw of the Hop Up (inside the hole shown by the arrow) counterclockwise (CCW) to reduce the amount of hop up (6 turns maximum from the factory setting).



If the M4 Carbine is shooting with not enough lift, you don't have enough hop up. Rotate the set screw of the Hop Up (arrow) clockwise (CW) to increase the amount of hop up. The Hop Up is designed with a maximum setting stop where continued CW turns stops



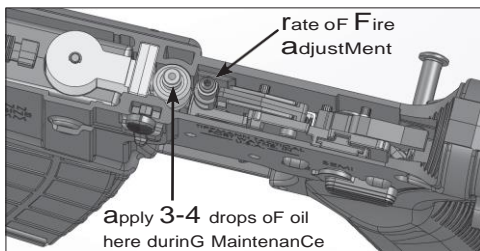
increasing hop up.

## Rate of Fire Adjustment

The M4 Carbine utilizes air to control the Full Auto Trigger Reset and Bolt Release cycle. As the gun fires, a small amount of air enters the response cylinder to reset the trigger. The air flow out of the cylinder is controlled by the Rate of Fire Adjustment valve to time the bolt release for the chosen rate of fire. The Rate of Fire Adjustment range has extremes that are as follows:

### Rate of Fire Adjustment Screw turned too far clockwise (CW, in)

Air will not be released from the cylinder and the trigger will not release the sear. The trigger will feel spongy, will not fire the gun and the safety may not be moved from full auto position. Refer to page 25 *Troubleshooting - Pulling the Trigger does not release the bolt* for details on how to release the trigger. Once you have the receiver open, turn the Rate of Fire Adjustment screw CCW (out) until the trapped air is released. Note: Turn the adjustment screw CCW (out) until the trapped air is vented to begin Full Auto Adjustment.



### Rate of Fire Adjustment Screw turned too far counterclockwise (CCW, out)

The trigger will reset and proceed with Bolt Release Cycle before the bolt is in the ready position. The gun will shoot a single shot or a short burst in Full Auto mode. The Full Auto trigger assembly is going faster than the rear bolt can cycle.

To adjust the Rate of Fire, open the M4 Carbine as described in *Velocity Adjustment* steps 1 through 3 on the previous page. Use a 1/16" hex key to turn the screw using only 1/8 turn increments each time. A recommended starting point for the adjustment screw is 1 turn out from fully turned clockwise (in).

Turning the adjustment screw CCW (out) increases the rate of fire. Turned too far, the gun will fire single shots or short bursts.

Turning the adjustment screw CW (in) decreases the rate of fire. Turned too far, the gun will not fire or will cycle very slowly.

## Factory Settings

Hop up factory setting is 5-6 turns CCW (out) from fully turned CW (in). Essentially, this is zero hop-up on the ball. This position is also what we recommend prior to removing barrel assembly/hop-up bucking. We do this so the hop-up adjustment block clears the barrel inner liner slot when removed.

Rate of Fire factory setting has the adjustment screw set for maximum rate of fire. See *Rate of Fire Adjustment* above.

## Tournament Lock (optional equipment)

Tippmann Sports offers a Tournament Lock kit. It consists of a replacement Take Down Pin that cannot be pushed out without using a tool. This prevents access to the velocity adjustment screw during play. If you want to install a Tournament Lock, contact Tippmann Sports, LLC. Follow the installation instructions that come with the Tournament Lock Pin.

## M4 Carbine Alternative Air Delivery

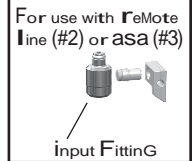
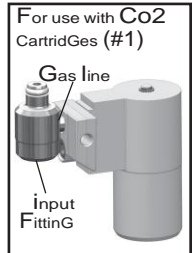
This M4 Carbine Low Energy Air Gun (LEAG) offers three options for propulsion of airsoft BBs from the air gun:

#1 - The Magazine holds a standard 12 gram CO2 cartridge to power the M4 Carbine. The Puncture Valve Assembly is used to pierce a 12 gram CO2 cartridge.

#2 - A Remote Air Line connector (included, but requires an air line and air source) is installed into the Grip. Requires removal of the puncture valve (page 12). Connect the Remote Line to an 800 PSI regulated cylinder of High Pressure Air (HPA) or CO2. Customers can use an aftermarket magazine for this method (most work well with this M4 Carbine).

#3 - An optional Air Supply Adapter (ASA) kit from Tippmann is installed for use with a cylinder of (regulated at 800 PSI or lower) HPA or a CO2 cylinder. Requires removal of the grip and the puncture valve. Customers can use an aftermarket magazine for this method (most work well with this M4 Carbine).

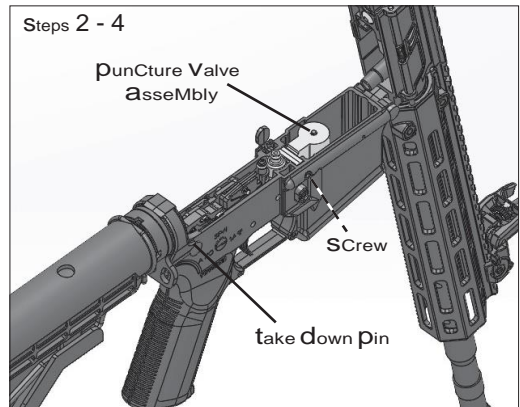
Review Air/CO2 Supply Cylinder Safety Tips (page 17).



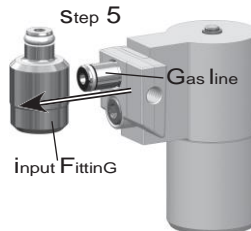
### Converting from 12g CO2 Cartridge to Remote Line or ASA

If you are using a Remote Air Line, ASA air delivery system, or an aftermarket magazine, you need to remove the Puncture Valve Assembly:

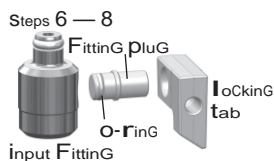
1. Remove the air supply. Press the Magazine Release Button to remove the Magazine from the receiver (see Step 4 on page 9).
2. From the left side of the M4 Carbine, push the Take Down Pin until enough head is available on the right side to hold onto it. Pull the head of the Take Down Pin only until it stops, as it can not be completely removed.
3. Pivot the barrel downward as shown. Remove and set aside the Screw.
4. Remove the Puncture Valve Assembly from the Lower Receiver.



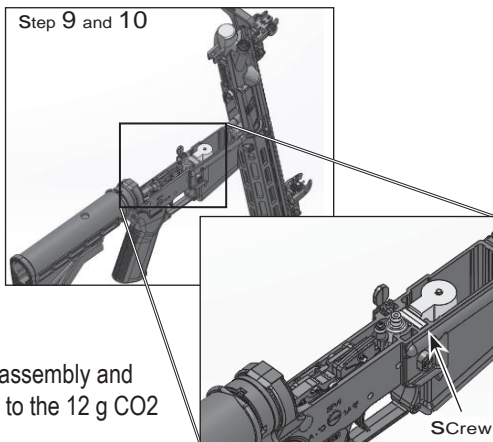
5. Remove the Input Fitting from the Gas Line.



6. Locate the Locking Tab and the Fitting Plug in the included accessory bag.
7. Install the O-Ring end of Fitting Plug into the Input Fitting.
8. Install the other end of the Fitting Plug into Locking Tab.



9. Reinstall this assembly into the M4 Carbine making sure the Input Fitting seats onto the internal gas line.



10. Reinstall the Screw from step 3 to the Lower Receiver.

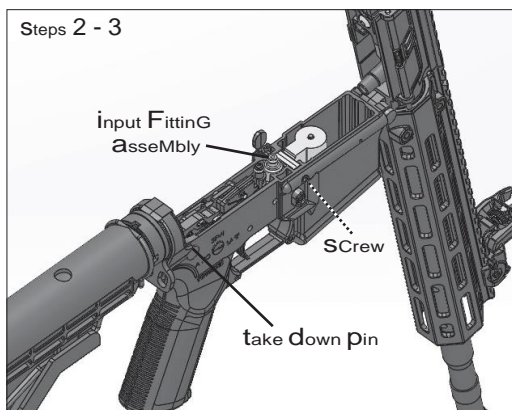
NOTE: Keep the removed Puncture Valve assembly and the Gas Line in case you decide to go back to the 12 g CO2 cartridge method of air delivery.

Go to page 14 for further Remote Line instructions.

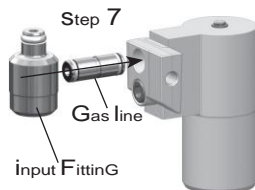
### Converting from Remote Line or ASA to 12g CO2 Cartridge

If you decide to go back to the 12g CO2 cartridge method, you have to reinstall the Puncture Valve:

1. Remove the air supply. Press the Magazine Release Button to remove the Magazine from the receiver (see Step 4 on page 9).
2. From the left side of the M4 Carbine, push the Take Down Pin until enough head is available on the right side to hold onto it. Pull the head of the Take Down Pin only until it stops, as it can not be completely removed.
3. Pivot the barrel muzzle downward. Remove and set aside the Screw.



4. Locate the Puncture Valve from previous removal.
5. Lift the Input Fitting, Fitting Plug, and Locking Tab from the Lower Receiver.
6. Remove the Input Fitting from the Fitting Plug.
7. If applicable, insert the Gas Line into the Puncture Valve. Install the Input Fitting onto the Gas Line.
8. Reinstall this assembly into the M4 Carbine making sure the Input Fitting seats onto the internal gas line. Reinstall the Screw from step 3 to the Lower Receiver.



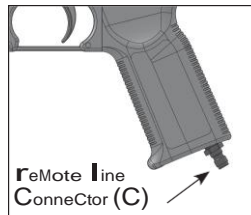
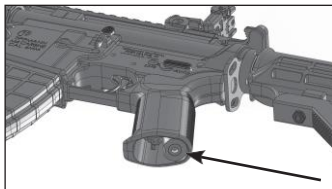




## Installing the supplied Remote Line Connector

Only perform these steps after converting from 12g to Remote Line as described on page 12.

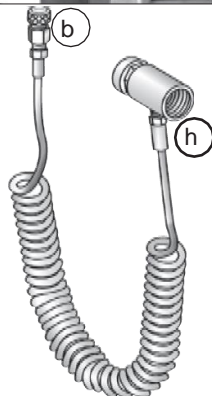
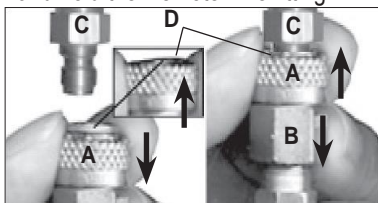
1. Using a 3/16" hex key, remove the plug (shown by arrow) from the Lower Gas Line in the bottom of the M4 Carbine Grip.
2. Locate the Remote Line connector supplied in your M4 Carbine accessory bag.
3. Using your fingers, start threading the Remote Line connector into the Lower Gas Line.
4. Tighten using 7/16" wrench until snug.



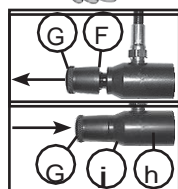
If either the plug or Remote Line connector is reinstalled into the grip, use teflon tape on the threads to prevent air leaks.

## Installing the Remote Line System

1. Eye protection designed for airsoft use must be worn by the user and any person within range.
2. Unload the M4 Carbine (page 9) and remove any existing air/CO2 supply (page 17).
3. Put the Selector Switch in Safe mode (see page 6).
4. Cock the M4 Carbine by pulling the charging handle all the way back and allow it to return to the forward position. Always keep M4 Carbine in the cocked position when the air/CO2 supply is being attached to the M4 Carbine. This helps prevent an accidental discharge.
5. With no cylinder attached to the Remote Line, pull and hold the Remote Line fitting locking ring (A) down to connect or remove the Remote Line fitting (B).
6. To connect, hold down the Locking Ring (A), push the remote line fitting (B) onto the connector (C), and then release the locking ring to the lock position (D). Pull down on the Remote Line fitting (B) to be sure it is secured properly.
7. Turn off the Remote Line air/CO2 flow control valve (F) by turning the flow control knob (G) counterclockwise outward until it stops (see the top G in the illustration at right).
8. Install the air/CO2 cylinder to the Remote Line ASA (H). First mark the cylinder and cylinder valve if necessary (see *Air/CO2 Cylinder Warnings* and *Safety Tips* on pages 16-17). Lubricate the cylinder valve O-ring with Tippmann® Certified oil, then insert the cylinder valve end into the ASA of the Remote Line (H). Twist the cylinder clockwise into the ASA until it stops. Your M4 Carbine will be ready to fire once you:
  - turn on the flow control (G) clockwise until it stops (J),
  - switch the Selector Switch from Safe to Semi or Auto.



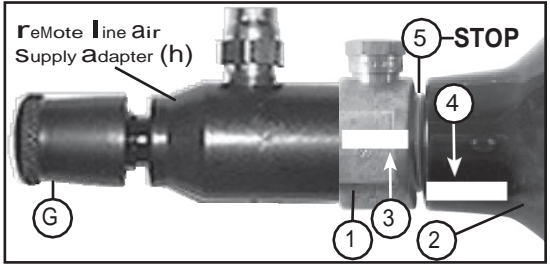
To turn off the air/CO2 supply, remove the magazine (page 9), turn the flow control (G) completely counterclockwise until it stops (F). The air line is still under pressure. Point the M4 Carbine in a safe direction and discharge any remaining gas by pulling the trigger until the M4 Carbine stops firing. To turn the air supply back on, first pull back on the charging handle, then turn flow control completely



clockwise (J).

---

9. Air/CO2 Cylinder Removal from Remote Line ASA — You must first read the *Air/CO2 Cylinder Warnings* and *Safety Tips* on pages 16-17 before beginning the cylinder removal process in step 9. Unload the M4 Carbine magazine (page 9).
10. Refer to the illustration at right. Whenever you turn the air/CO2 cylinder (2) during removal, watch the mark (4) on the cylinder and the mark (3) on the cylinder valve to be sure that they rotate together. If you see the marks begin to separate (5), STOP! and take your M4 Carbine and cylinder to a qualified professional, such as a "C5" certified armsmith.

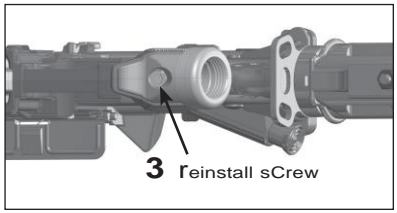
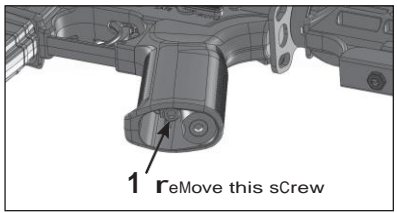


11. Put the trigger safety in Safe mode (see page 6).

**Optional ASA Installation**

Only perform these steps after converting from 12g to ASA as described on page 12.

1. Unload the M4 Carbine (page 9) and remove any existing air/CO2 supply (page 17).
2. Put the Selector Switch in Safe mode (see page 6).
3. Remove the Socket Head Screw from the bottom of the Grip (arrow in graphic 1) and remove the Lower Gas Line Connector.
4. Align the ASA with the Gas Line (graphic 2) and insert into the Grip. Secure with the screw removed in step 2 shown in graphic 3.



**HPA/CO2 Cylinder Installation**

1. Cock the M4 Carbine by pulling the charging handle all the way back and allow it to return to the forward position. Always keep M4 Carbine in the cocked position when the air/CO2 supply is being attached to the ASA. This helps prevent an accidental discharge.
2. Eye protection designed for airsoft use must be worn by the user and any person within range.
3. Lubricate the cylinder valve O-ring with Tippmann Certified oil.
4. Insert the air/CO2 supply cylinder valve into the air/CO2 supply adapter (ASA) at the bottom of the grip.
5. Twist the cylinder clockwise into the air/CO2 supply adapter until it stops. Use caution as the M4 Carbine is now capable of firing after you put the Selector Switch in Fire mode.
6. To remove the cylinder, first unload the M4 Carbine (see page 9). Turn the cylinder approximately 3/4 turn counterclockwise. This allows the air supply pin valve to close so that no air will enter the M4 Carbine.





Point the M4 Carbine in a safe direction and discharge any remaining gas in the M4 Carbine by pulling the trigger until the M4 Carbine stops firing. If your M4 Carbine continues to fire, the cylinder pin valve has not closed yet (the cylinder pin valve could be longer than usual. Because of the variances in cylinder pin valve parts, each cylinder varies slightly on exactly how far it has to be turned) and you will have to turn the cylinder counterclockwise a little further and repeat this step until the M4 Carbine does not fire, then remove the cylinder. NOTE: If during this step, you turned the cylinder and it began to leak before you pulled the trigger, the cylinder O-ring should be checked for damage before reassembly (see *Repairing Air/CO2 Cylinder Leaks* on page 18).

## Air/CO2 Supply Cylinder Warnings

### **⚠ WARNING**

**The brass or nickel plated cylinder valve (1) is intended to be permanently attached to the air or CO2 cylinder (2). An air or CO2 cylinder can fly off with enough force to cause serious injury or death if the cylinder unscrews from a cylinder valve.**

Refer to the top graphic at right. There have been reported incidents caused by players unknowingly unscrewing the cylinder (2) from the cylinder valve (1). This occurs when the player thinks the entire valve-cylinder assembly is being unscrewed from the air/CO2 supply adaptor of the Air Gun, when in fact he/she is unscrewing the cylinder from the cylinder valve.

To avoid this danger, it is recommended (if your cylinder is not already marked) that you use paint or nail polish to place a mark (3) on the cylinder valve, and place another mark (4) on the cylinder, in line with the #3 mark as shown.

Whenever you turn the cylinder during removal, watch the marks on the cylinder and the cylinder valve to be sure that they rotate together. If at any time these marks start to separate as shown in the bottom graphic, the cylinder is starting to unscrew from the cylinder valve and you must **STOP** and take the entire unit to a "C5" certified airsmith for safe removal and/or repair.

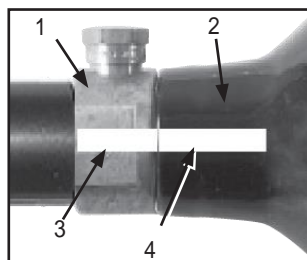
**NOTE:** The cylinder valve should unscrew from the Air Gun in about 3 or 4 full turns. If you finish the 4<sup>th</sup> full turn and the cylinder valve is not unscrewed from the Air Gun, **STOP!**

Take the entire unit to a "C5" certified airsmith for safe removal and/or repair. Locate a "C5" certified airsmith at [www.paintball-pti.com](http://www.paintball-pti.com).

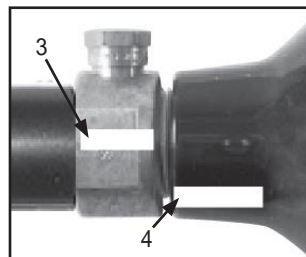
Whether you have a new or used refillable air or CO2 cylinder, you are at risk if any of the following has occurred:

- The valve unit was replaced or altered after purchase.
- An anti-siphon device was installed.
- The valve unit was removed from the cylinder for any reason.
- Any modification was done to the refillable air or CO2 cylinder.

If any of these conditions has occurred, take your air or CO2 cylinder to a "C5" certified airsmith for inspection or contact the cylinder manufacturer.



Properly Marked Valve and Cylinder



Misaligned Valve and Cylinder

## Air/CO2 Supply Cylinder Safety Tips

SAFETY TIPS to ensure that your air or CO2 cylinder is safe for play:

- Improper use, filling, storage, or disposal of air or CO2 cylinder may result in property damage, serious personal injury, or death.
- Make sure that any maintenance or modification to any air or CO2 cylinder is done by a qualified professional, such as a “C5” certified airsmith.
- The use of anti-siphon devices is not recommended. However, if one is already installed on your air or CO2 cylinder or is desired, it is critical that your cylinder be checked by, or the device installed by, a qualified professional.
- All air or CO2 cylinders must be filled only by properly trained personnel.
- Cylinder valves must be installed only by properly trained personnel.
- Do not overfill a cylinder! Never exceed the air or CO2 cylinder’s capacity.
- Do not expose pressurized air or CO2 cylinder to temperatures exceeding 130 degrees Fahrenheit (55 degrees Celsius).
- Do not use caustic cleaners or strippers on the air or CO2 cylinder or cylinder valve and do not expose to corrosive materials.
- Do not modify the air or CO2 cylinder in any way. Never try to disassemble the cylinder valve from the air or CO2 cylinder.
- Any air or CO2 cylinder that has been exposed to fire or heated to a temperature of 250 degrees Fahrenheit (121 degrees Celsius) or more must be destroyed by properly trained personnel.
- Use appropriate gas for your cylinder. Only use CO2 in a CO2 cylinder and only use compressed air in a compressed air cylinder.
- Keep all cylinders out of the reach of children.
- The Air or CO2 cylinder should be inspected and hydrostatically retested at least every 5 years by a DOT licensed agency.
- Keep exposed skin away from escaping gas when installing or removing air/CO2 supply, or if the M4 Carbine or air/CO2 supply is leaking. Compressed air and CO2 gasses are very cold, and can cause frostbite under certain conditions.

**NOTE:** Locate a “C5” certified airsmith at [www.paintball-pti.com](http://www.paintball-pti.com).

## Air/CO2 Supply Cylinder Removal

These instructions apply to either Air Supply Adapter (ASA) or Remote Line ASA installed cylinders.

1. Read *Air/CO2 Supply Cylinder Warnings* (page 16) and *Air/CO2 Supply Cylinder Safety Tips* (above) before beginning the cylinder removal process.
2. Eye protection designed for airsoft use must be worn by the user and any person within range.
3. Remove the magazine from the M4 Carbine.

4. For Remote Line ASA only, turn the Flow Control knob counterclockwise until it stops.
5. Set the Selector Switch to a fire position. Point the gun in a safe direction, and discharge any remaining gas in the gun by repeatedly pulling the trigger until the gun stops firing (this may take 4-5 shots). For grip ASA installed cylinders, if your gun continues to fire, the cylinder's pin valve has not closed yet (the cylinder pin valve could be longer than usual. Because of the variances in cylinder pin valve parts, each cylinder varies slightly on exactly how far it has to be turned). Turn the cylinder counterclockwise a little further and repeat this step until the gun does not fire. Only then remove the air/CO<sub>2</sub> supply cylinder.  
NOTE: If during this step, you turn the air/CO<sub>2</sub> supply cylinder and it begins to leak before you pull the trigger, the cylinder O-ring should be checked for damage before any re-assembly (see *Repairing Air/CO<sub>2</sub> Supply Cylinder Leaks* below).
6. After the air/CO<sub>2</sub> supply cylinder is removed, again point and fire the gun in a safe direction to verify the gun is completely discharged of gas.
7. Move the Selector Switch to the Safe mode (see page 6).

## Repairing Air/CO<sub>2</sub> Supply Cylinder Leaks

The most common leak occurs from a bad air/CO<sub>2</sub> supply cylinder valve O-ring. To replace a valve O-ring you must first remove the bad O-ring and then install a new one. This O-ring is located on the tip of your air/CO<sub>2</sub> supply valve. The best valve O-rings are made of urethane. Urethane O-rings are not affected by high air/CO<sub>2</sub> supply pressures. These may be purchased from Tippmann or your local airsoft dealer.

**NOTE:** If a new air/CO<sub>2</sub> supply valve O-ring does not resolve an air/CO<sub>2</sub> supply leak, do not attempt to repair the air/CO<sub>2</sub> supply cylinder. Contact Tippmann Sports, LLC, your local airsoft dealer, or a "C5" certified airsmith.

## Cleaning and Maintenance

- To reduce the chance of an accidental discharge, follow the *Unloading* instructions on page 9 and, if applicable, *Air/CO<sub>2</sub> Supply Cylinder Removal* (on page 17).
- Eye protection (safety glasses) must be worn.
- Read and follow air/CO<sub>2</sub> supply cylinder warnings and safety tips on pages 16-17.
- Do not disassemble a gun while it is pressurized with air/CO<sub>2</sub>.
- Do not pressurize a partially assembled gun.
- Follow warnings listed on the air/CO<sub>2</sub> supply cylinder for handling and storage.
- Familiarize yourself with instructions listed on air/CO<sub>2</sub> supply cylinder.
- Contact the air/CO<sub>2</sub> supply cylinder manufacturer with any questions.
- Do not use any petroleum based cleaning solvents.
- Do not use any cleaning solvents that come in aerosol cans.

NOTE: Petroleum based products and aerosol products can damage your O-rings.

To clean your M4 Carbine exterior, use a damp towel to wipe off any debris. To maintain your M4 Carbine in good working condition, inspect, clean, and replace any damaged parts.

Lubricate the air/CO<sub>2</sub> supply cylinder valve's O-ring with Tippmann® Certified Oil. 12 gram CO<sub>2</sub> cartridges have a small amount of oil inside them. If you are using a HPA or CO<sub>2</sub> cylinder, applying 3 to 4 drops of oil in the Puncture Valve Input Fitting (see top of page 11) lubricates internal drive



parts. Whenever the M4 is disassembled, apply oil to the Rear Bolt O-ring. Use Tippmann oil to lightly lubricate O-rings and springs.

The best valve O-rings are made of urethane. Urethane O-rings are not affected by high air/CO2 supply pressures. These may be purchased from Tippmann or your local airsoft dealer.

If your Magazine becomes dirty, you can use compressed air to blow away debris. Follow the following steps for disassembling the Magazine.

1. Push in the button on the bottom of the Magazine.
2. Slide the Shell Cap off from the Magazine.
3. Push on the bottom of the Magazine to slide the Inner Magazine Assembly out from the Magazine Outer Shell.
4. Use compressed air to blow away dust or debris.
5. When reassembling the Magazine, push in on the button to install the Shell Cap.



## Storage

Before storage, always unload the M4 Carbine (page 9) and remove any air/CO2 supply (see page 17). Put the Selector Switch in Safe position (see page 6). Before storing your M4 Carbine make sure that it is cleaned and oiled (see *Cleaning and Maintenance*). Store your M4 Carbine with the bolt in the forward, uncocked position. Store your M4 Carbine in a dry area.

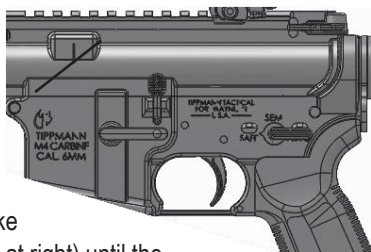
When removing your M4 Carbine from storage, make sure the Selector Switch is in Safe mode (see page 6).

## M4 Carbine Disassembly and Assembly

Set up a workbench with plenty of workspace to make sure no small parts become lost. Follow these safety instructions at all times when disassembling or re-assembling your M4 Carbine.

- First follow *Unloading Your M4 Carbine* on page 9 and *Air/CO2 Supply Cylinder Removal* instructions on page 17.
- Always wear eye protection (like Safety Glasses) when performing any disassembly or re-assembly.
- Do not pressurize a partially assembled M4 Carbine.
- Put the M4 Carbine into the uncocked position. If your M4 Carbine is cocked, move the Selector Switch to a fire mode, point the M4 Carbine in a safe direction, and pull the Trigger.

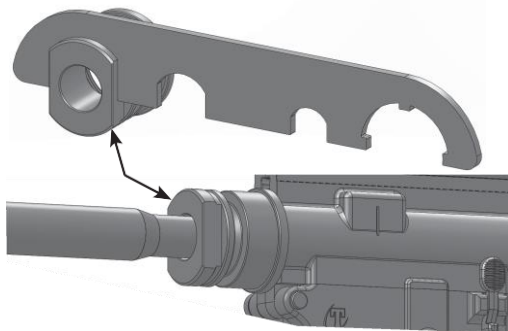
Disassembly instructions are listed here. To re-assemble, do the steps in the reverse order. Refer to the exploded view parts diagrams included in this manual. Item numbers for specific drawings are in parenthesis. For part numbers and quantities, refer to [www.Tippmann.com](http://www.Tippmann.com).



1. On the left side of the Receiver, push in on the Take Down Pin and the Pivot Pin (shown by the arrows at right) until the pin heads are accessible on the right side.
2. From the right side of the M4 Carbine, pull out the Take Down Pin and the Pivot Pin until each stops. They are not completely removeable.
3. The Upper Receiver and the Lower Receiver can now be separated from each other.

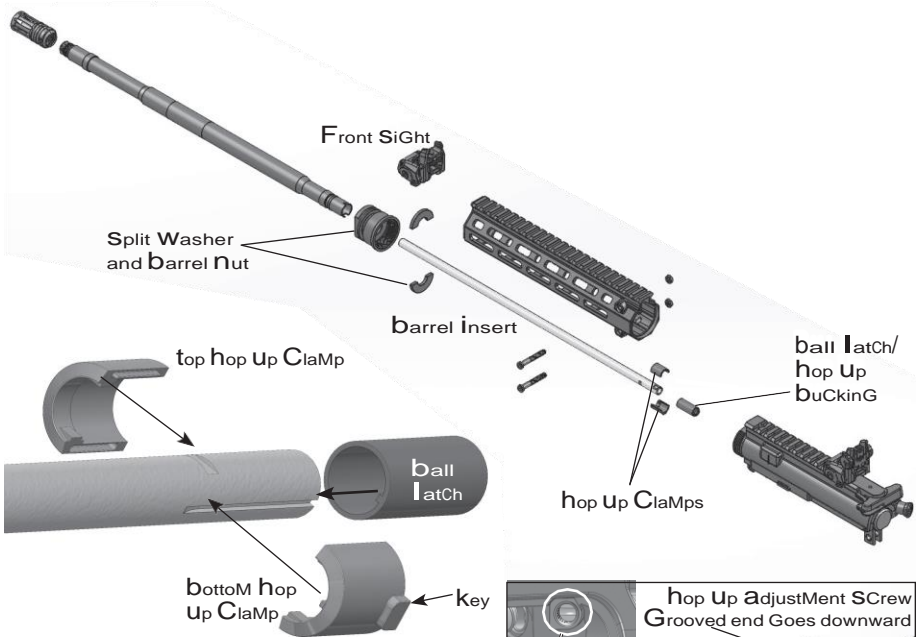
### Upper Receiver (refer to page 28)

1. Remove two socket head cap screws from the end of the floating hand guard (shown in illustration on the next page).
2. Slide the hand guard off in the direction of the barrel muzzle.
3. Back out the Hop Up Adjustment Screw completely from the upper receiver (see pages 10 and 11) to make barrel removal easier.
4. Use the included wrench to loosen the Barrel Nut (9) to remove it from the Upper Receiver. Be ready to catch the Split Barrel Washer (8) when the Barrel Nut is loose.
5. The entire Barrel Assembly (7) can now be pulled straight out from the Upper Receiver.



### Barrel Assembly (refer to the next page for a parts diagram)

1. Pull the Barrel Insert out of the outer Barrel.
2. Remove the top and bottom Hop Up Clamp halves. When reinstalling, note that the top half is keyed to fit into the Upper Receiver in the proper orientation.
3. Remove the Ball Latch/Hop Up Bucking. When reinstalling, applying a small amount of silicone spray is acceptable. Note that the bottom of the Ball Latch and bottom Hop Up Clamp are keyed to fit onto the Barrel Insert in the proper orientation.
4. For reassembly, hold the Barrel Assembly upward. With one hand, hold the split washers on the Barrel. Next, pull the Barrel Nut down to encase the Split Washers.
5. Insert the Barrel Insert with Hop Up Ball Latch (Bucking) and Clamps aligned with keyway in Upper Receiver.
6. Tighten the Barrel Nut (see *Upper Receiver* above).

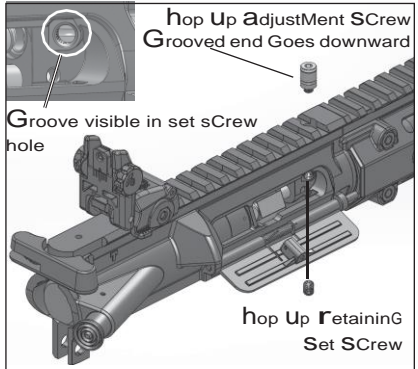


**Hop Up Assembly**

1. Remove hop up retaining set screw using a 3/32" hex key.
2. Remove the hop up assembly from pocket in upper receiver using a 1/8" hex key.

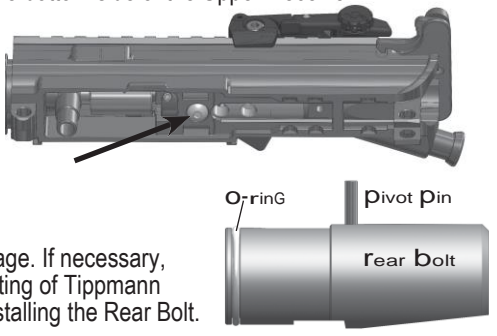
To reinstall:

1. Insert hop up assembly into receiver. Ensure alignment of groove of adjustment screw is visible in the set screw hole.
2. Insert hop up retaining set screw until it is slightly above the surrounding surface. Do not over-tighten.
3. Hop up system is now ready to be adjusted for accuracy/range (see page 10).



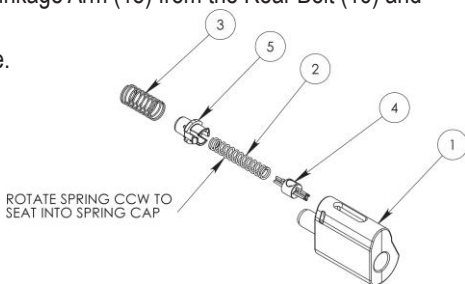
**Rear Bolt**

1. Remove the 10-32 Screw (23) from the bottom side of the Upper Receiver.
2. Pull the Charging Handle out 2 inches to expose the Bolt. Slide the Rear Bolt assembly out of the back end of the M4 Carbine. The Front Bolt (17), Linkage Arm (15), and Valve with Power Tube (14) can now be removed from the rear end of the Upper Receiver.

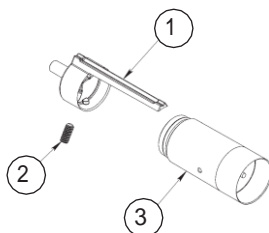


## Front Bolt, Power Tube, and Valve

1. Referring to page 28, disconnect the Linkage Arm (15) from the Rear Bolt (16) and Front Bolt (17).
2. Slide the Front Bolt off the Power Tube.
3. The parts of the Front Bolt are:
  - (1) Front Bolt - ACT
  - (2) Spring
  - (3) Spring
  - (4) Spring Keeper
  - (5) Front Bolt Spring Cap
4. When reassembling, be sure the hole in item 4 is facing upwards. The Linkage Arm goes into this hole.



5. The parts of the Power Tube are:
  - (1) Power Tube
  - (2) Set Screw, 8-32x3/8"
  - (3) Valve Assembly



## Lower Receiver

Refer to page 27.

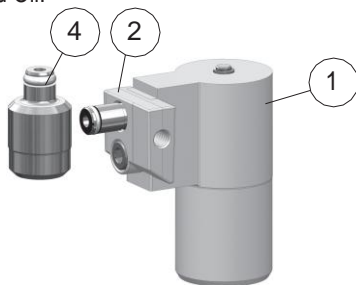
1. Remove the Selector Switch by pulling it out from the receiver side.
2. Make sure the Take Down Pin is out as far as it will go. It can not be completely removed.
3. Lift the Trigger Group (3) from the Lower Receiver.
4. Remove Screw (8) shown on page 27.
5. Lift the Puncture Valve (5) from the Lower Receiver.
6. To lubricate the Drive Spring (it's inside the Stock Tube), orient the Lower Receiver as shown. The Drive Spring is held in place using friction. A repeated quick movement downward slides the Drive Spring out enough to grab hold of it. Lubricate with Tippmann Certified Oil.



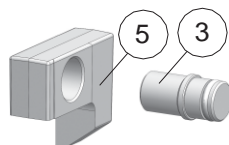
## Puncture Valve Assembly

The Puncture Valve Assembly (as shown at right) is used when a 12 gram CO2 cartridge is installed in the magazine supplied with your M4

Carbine. If you are using a Remote Air Line, ASA air delivery system, or an aftermarket magazine, you need to remove the Puncture Valve Assembly as described on page 12 and use parts 3 and 5 from the accessory bag (included with the M4 Carbine).



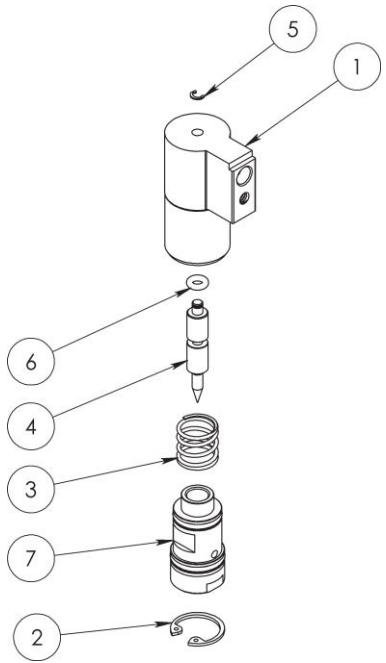
ITEM	PUNCTURE VALVE ASSY DESCRIPTION
1	Puncture Valve Complete
2	Puncture Valve Gas Line Complete
3	Fitting Plug (for Remote Line or ASA use only)
4	Input Fitting, Dual Feed, Complete
5	Fitting Plug Locking Tab (for Remote Line or ASA use only)



## Puncture Valve Body Assembly

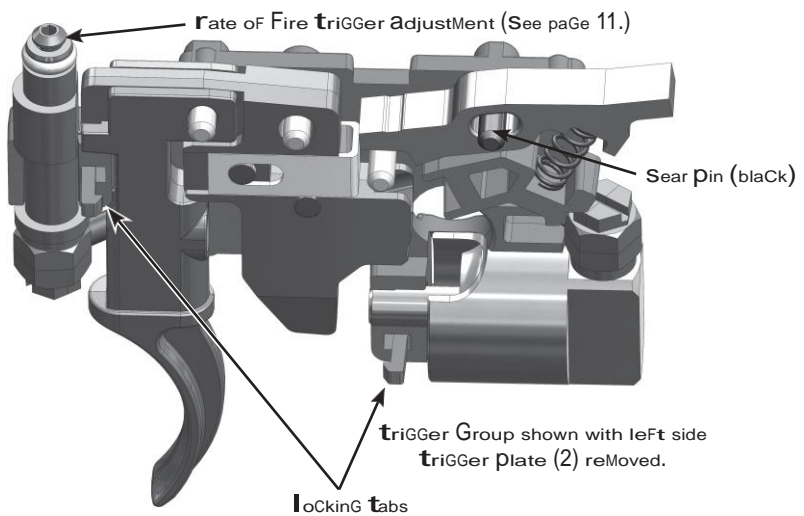
ITEM	PUNCTURE VALVE BODY DESCRIPTION
1	Puncture Valve Body
2	9/16" Internal Retaining Ring
3	Spring
4	Puncture Pin
5	C-Clip
6	O-ring, CU, 70A, 2-006
7	Puncture Piston Complete

1. Remove and set aside the Internal Retaining Ring (2).
2. Remove C-Clip (5). Push a 1/16" hex key through the hole on top of item 1, moving the Puncture Piston (7) from the Puncture Valve Body (1). Lubricate the O-rings with provided Tippmann Certified Grease.
3. Inspect the Spring (3) and O-ring (6) for wear, and replace if necessary.
4. Reinstall all parts into the Puncture Valve Body and retain by installing the top C-Clip (5), then the Internal Retaining Ring (2).



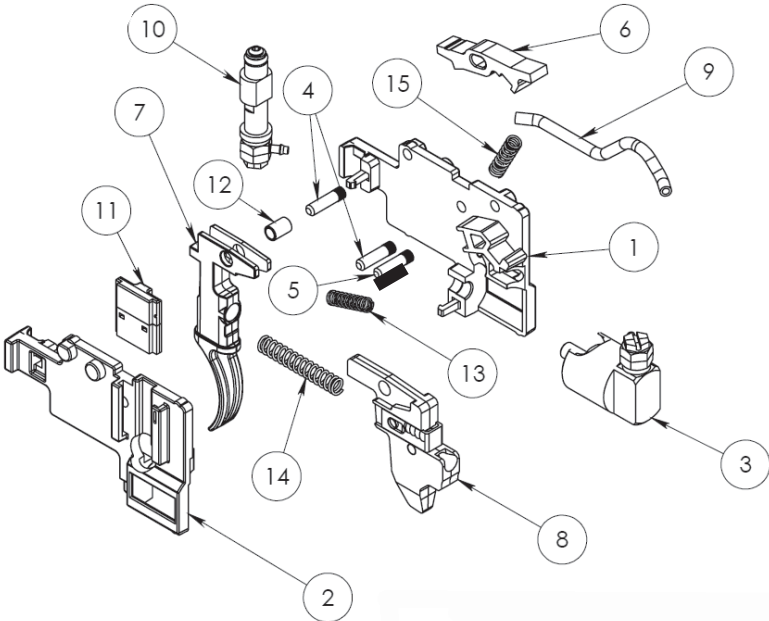
## Trigger Group Assembly (parts diagram and parts list are on the next page)

1. Remove the Selector Switch by pulling it out from the receiver side.
2. Lift the Trigger Group Assembly from the Lower Receiver.
3. Lay the Trigger Group on its right side. Gently pry two locking tabs (see graphic below) clear of the retaining holes. Lift the left Trigger Plate (2) from the assembly.



4. Inspect all the Springs for wear, replace if necessary.
5. When reassembling the Trigger Group, make sure the Springs and Dowel Pins are in their proper places. It is very important that the Sear Pin (5, black) is in the proper location. Refer to the provided illustrations.
6. Reinstall the Trigger Group to the M4 Carbine.
7. The Trigger Group must be in place to adjust the Flow Control (11). Use a 1/16" hex key in the location shown to change the rate of fire (see page 11).

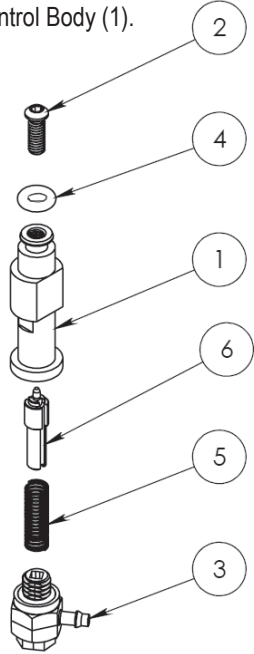
ITEM	TRIGGER GROUP ASSEMBLY DESCRIPTION
1	Trigger Plate, Right
2	Trigger Plate, Left
3	Response Cylinder Assembly
4	Dowel Pin, 1/8 x 1/2, Knurled
5	Dowel Pin, Black
6	Sear
7	Front Trigger
8	Rear Trigger Complete
9	Response Gas Line, 5/64" ID x 1/8" OD
10	Flow Control Complete
11	Safety Detent Complete
12	Trigger Bushing
13	Spring, Compression
14	Spring, Comp., 1.174" FL x 0.188" OD
15	Spring, Comp., 0.600" FL x 0.172" OD



## Flow Control Assembly

1. Remove the Set Screw (2) by unthreading from the Flow Control Body (1).
2. Inspect the O-Ring (4) for damage and replace if necessary.
3. Remove the Banjo Fitting (3) to access the Flow Control Machined Pin (6) and the Spring (5).

ITEM	FLOW CONTROL ASSEMBLY DESCRIPTION
1	Flow Control Body
2	#4-48 x 5/16" Set Screw with Vent
3	Banjo Fitting Assembly
4	O-Ring, 2-006
5	Spring
6	Flow Control Machined Pin



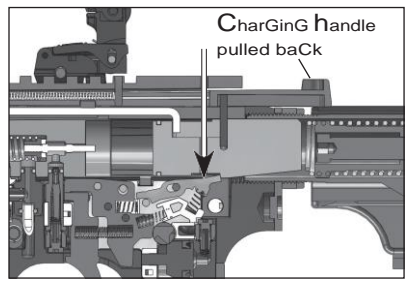
## Troubleshooting

**Problem:** You cannot pull the Trigger back.

**Solution:** Unload and remove the magazine. Remove the air supply. Move the Selector Switch to Semi or Auto position. Pull the Trigger to see if it will now move back when pulled.

**Problem:** Pulling the Trigger does not release the Rear Bolt.

**Solution:** Manually release the Sear from the Rear Bolt by doing the following: Remove the air supply (release the Magazine from the receiver, turn off the Remote Line, or remove air supply cylinder from the ASA, see pages 16 - 17). Remove and unload the magazine. Find the hole in the top of the Charging Handle. Pull back the Charging Handle until you can insert a 3/32" hex key into the hole. As shown in the right graphic (double arrow), push down with the hex key to release the Sear from the Rear Bolt. You will hear a click when the Sear releases the Rear Bolt.



**Problem:** Pulling the Trigger does not fire an airsoft BB.

**Solution:** The barrel may have a broken BB lodged inside it. Airsoft BBs not labeled as Precision BBs may break in the barrel when firing. Follow the instructions on page 20 to remove the barrel for cleaning.

**Problem:** You are unable to close the M4 Carbine when using an aftermarket magazine.

**Solution:** Remove the Puncture Valve as described on page 12. If the Puncture Valve is not removed, there will be interference when you try to close the M4 Carbine while using an aftermarket magazine.

**M4 Carbine Low Energy Air Gun**

Manufactured by

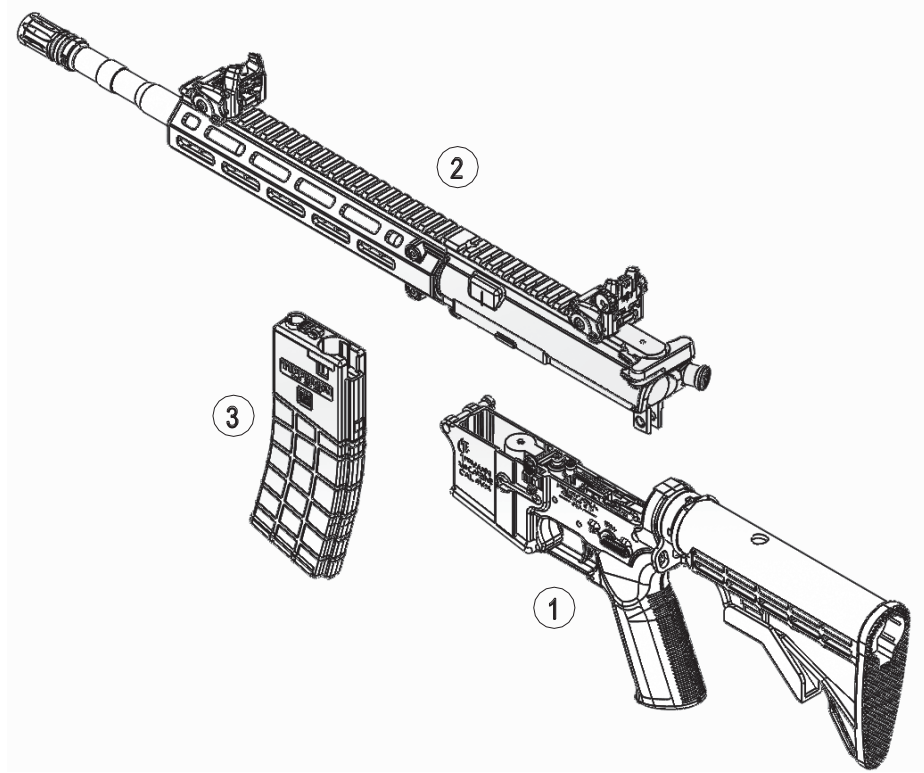
**TIPPMANN®**

**1-800-533-4831**

**[www.Tippmann.com](http://www.Tippmann.com)**

For part numbers and quantities, refer to [www.Tippmann.com](http://www.Tippmann.com).

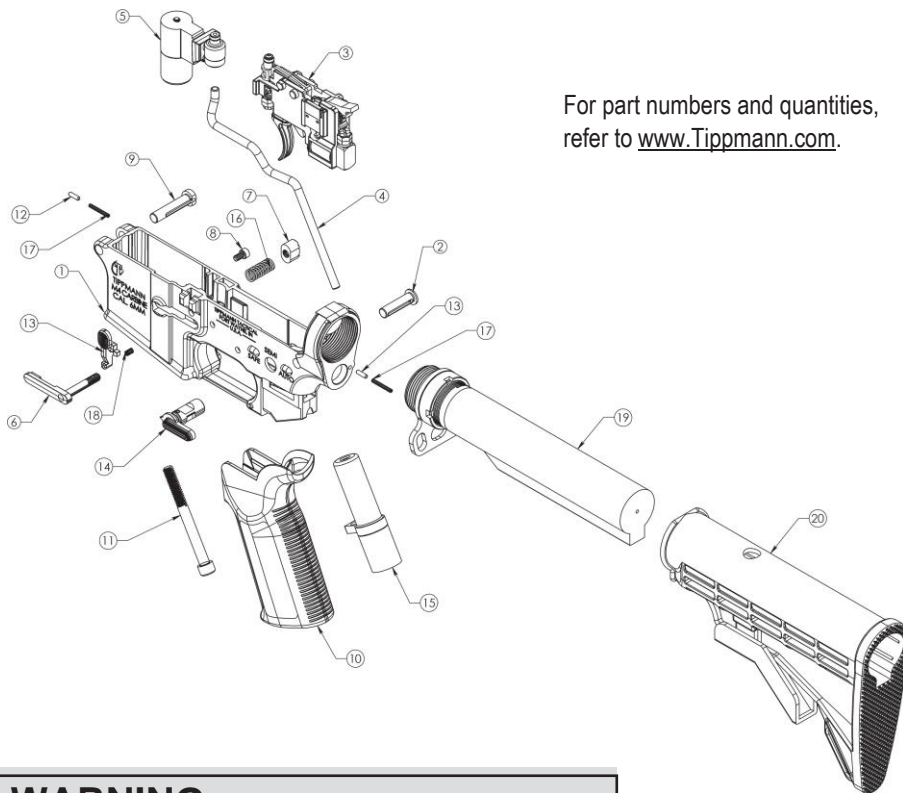
ITEM	DESCRIPTION
1	Lower Receiver Assembly
2	Upper Receiver Assembly
3	12 Gram Magazine Complete





Lower Receiver Assembly

ITEM	DESCRIPTION
1	Lower Receiver
2	Take Down Pin
3	Trigger Group Complete
4	Air Line, Main
5	Puncture Valve with Locking Tab and Fitting
6	Magazine Catch
7	Magazine Latch Button
8	SHCS #6-32 X 1/4"
9	Pivot Pin
10	Grip
11	SHCS - 1/4-20 UNC X 2.5"
12	Pin Detent
13	Bolt Catch
14	Safety
15	Lower Gas Line Connector Complete
16	Spring, Comp., 1.156" F.L., X 0.297" O.D.
17	Spring, Comp., 0.750"FL X 0.0.84"OD
18	SPRING, COMP., 0.120" O.D., X 0.438" F.L.
19	Collapsible Stock Tube Complete
20	Collapsible Butt Stock Complete

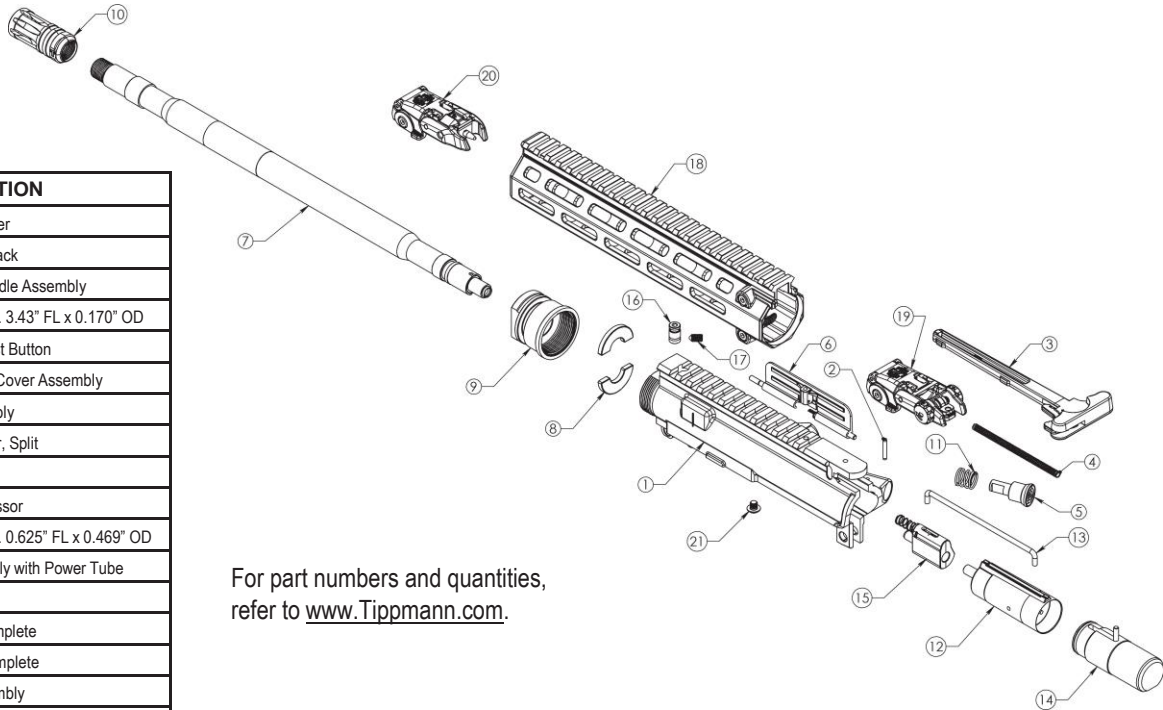


For part numbers and quantities, refer to [www.Tippmann.com](http://www.Tippmann.com).

**WARNING**

**Do not disassemble this M4 Carbine while it is pressurized with air/CO2. Do not pressurize a partially assembled air gun.**

ITEM	DESCRIPTION
1	Upper Receiver
2	Dowel Pin, Black
3	Charging Handle Assembly
4	Spring, Comp. 3.43" FL x 0.170" OD
5	Forward Assist Button
6	Ejection Port Cover Assembly
7	Barrel Assembly
8	Barrel Washer, Split
9	Barrel Nut
10	Flash Suppressor
11	Spring, Comp. 0.625" FL x 0.469" OD
12	Valve Assembly with Power Tube
13	Linkage Arm
14	Rear Bolt Complete
15	Front Bolt Complete
16	Hop Up Assembly
17	Set Screw, #10-32 UNF Tapered Point
18	M4 M-LOK Handguard
19	Rear Flip Up Sight
20	Front Flip Up Sight
21	Screw, #10-32 x 3/16" BHSCS



For part numbers and quantities,  
refer to [www.Tippmann.com](http://www.Tippmann.com).

## **⚠ WARNING**

**Do not disassemble this M4 Carbine while it is pressurized with air/CO2. Do not pressurize a partially assembled air gun.**

Ver. 09/15/18

## **M4 Carbine Low Energy Air Gun Specifications**

Model .....	M4 Carbine
Caliber.....	6mm
Action.....	Realistic Hard Kick Recoil Blowback
Power/Air Supply .....	12g CO2 Powered Magazine Standard; CO2 or HPA via Remote Line/ASA Options
Fire Modes.....	Semi-Auto, Full-Auto, and Safety
Hop Up.....	Adjustable
Magazine Capacity .....	.80 or 120 rounds of airsoft BBs
Cycle Rate .....	8-20 shots per second
Standard Barrel Length .....	14.3" / 363 mm
Overall Length (with standard barrel, stock fully compressed) .....	29.3" / 743 mm
Overall Length (with standard barrel, stock fully extended) .....	33.0" / 838 mm
Weight.....	5.5 lbs. / 2.5 Kg

Velocity: Always measure your M4 Carbine's velocity before playing airsoft and never shoot at velocities in excess of the velocity established by the playing field (see page 10).

## Warranty and Repair Information

TIPPMANN SPORTS, LLC (“Tippmann”) is dedicated to quality airsoft products and outstanding service. In the unlikely event of a problem with this Tippmann Low Energy Air Gun (“LEAG”) and/or Tippmann accessories (“Accessories”), Tippmann’s customer service personnel are available to assist you. For customer service and/or other information, please contact:

### **Tippmann Sports, LLC**

2955 Adams Center Road  
Fort Wayne, IN 46803  
www.Tippmann.com  
1-800-533-4831

### **Tippmann Sports Europe, SPRL**

Rue du Mont D’Orcq 16  
Z.I. Tournai Ouest, 7503 Froyennes, Belgium  
www.Tippmann.com  
Telephone +32 (0) 69 549 578

## Warranty Registration

To activate the LEAG’s Limited Warranty, you must register the LEAG within thirty (30) days of the date of original retail sale by:

1. Registering online at [www.Tippmann.com](http://www.Tippmann.com); or
2. Completing the attached warranty registration card and returning it to Tippmann at the address above.

The Limited Warranty for Tippmann Accessories does not require activation or registration; by registering the LEAG, you activate the warranty for the Accessories.

## Limited Warranty

Tippmann warrants to the original purchaser that it will make any repairs or replacements necessary to correct defects in material or workmanship, at no charge to you, for the LEAG for a period of one (1) year from the date of original retail sale. Further, Tippmann warrants to the original purchaser that it will make any repairs or replacements necessary to correct defects in material or workmanship, at no charge to you, for Tippmann Accessories for a period of ninety (90) days from the date of original retail sale. All Tippmann asks is that you properly maintain and care for the LEAG and Accessories (collectively, the “Product”) and that you have warranty repairs performed by Tippmann or a Tippmann Certified Tech Center.

This Limited Warranty is non-transferable, and it does not cover damage or defects to the Product caused by (a) improper maintenance; (b) alteration or modification; (c) unauthorized repair; (d) accident; (e) abuse or misuse; (f) neglect or negligence; and/or (g) normal wear and tear.

Tippmann does not authorize any person or representative to assume or grant any other warranty obligation with the sale of this Product.

THIS IS THE ONLY EXPRESS WARRANTY GIVEN WITH THE PURCHASE OF THIS PRODUCT; ANY AND ALL OTHER EXPRESS WARRANTIES ARE DISCLAIMED. THE IMPLIED WARRANTIES OF MERCHANTABILITY AND FITNESS FOR A PARTICULAR PURPOSE ARE LIMITED TO THE APPLICABLE LIMITED WARRANTY PERIOD SET FORTH HEREIN, AND NO WARRANTIES, WHETHER EXPRESS OR IMPLIED, SHALL APPLY AFTER EXPIRATION OF SUCH PERIOD.

Some states and nations do not allow limitations on the duration of implied warranties, so the above limitation may not apply to you.

The sole and exclusive liability of Tippmann and/or its authorized dealers under this Limited Warranty shall be for the repair or replacement of any part or assembly determined to be defective in material or workmanship.

TIPPMANN SHALL NOT BE LIABLE FOR, AND YOU EXPRESSLY DISCLAIM, ANY DIRECT, INDIRECT, CONSEQUENTIAL OR INCIDENTAL DAMAGES (COLLECTIVELY, "DAMAGES") ARISING OUT OF THE SALE OR USE OF, OR YOUR INABILITY TO USE, THE PRODUCT. NO PAYMENT OR OTHER COMPENSATION WILL BE MADE FOR DAMAGES, INCLUDING INJURY TO PERSON OR PROPERTY OR LOSS OF REVENUE WHICH MIGHT BE PAID, INCURRED OR SUSTAINED BY REASON OF THE FAILURE OF ANY PART OR ASSEMBLY OF THE PRODUCT.

Some states and nations do not allow the exclusion or limitation of incidental or consequential damages, so the above limitation or exclusion may not apply to you. This warranty gives you specific legal rights, and you may also have other rights that may vary from state to state or nation to nation.

## Warranty and Non-Warranty Repairs

When shipping the Product to Tippmann for warranty or non-warranty repair:

1. If you have aftermarket parts on your Low Energy Air Gun (LEAG), please test the LEAG with original stock parts before returning the LEAG for service or repair.
2. Always unload (page 9) and remove the air/CO<sub>2</sub> supply from the LEAG (page 17). Do not ship the air/CO<sub>2</sub> supply cylinder if it is not completely empty.
3. Ship the Product to the Tippmann address identified.
4. You must pre-pay postage and delivery charges.
5. Provide the date of purchase for the Product.
6. Briefly describe the repair requested.
7. Include your name, return address and a telephone number where you can be reached during normal business hours, if possible.

Tippmann makes every effort to complete its repair work within twenty-four (24) hours of receipt. Tippmann will return the Product to you via regular ground UPS. If you wish to have it returned using a faster service, you can request NEXT DAY AIR UPS OR SECOND DAY AIR UPS, but you will be charged for this service and must include your credit card number with the expiration date. Your credit card will be charged the difference in additional cost over regular ground shipping service.

**• NOTES • NOTAS •**